

# 症例 2

採取部位：肺・縦隔リンパ節 #7

採取方法：EBUS-TBNA

染色：Diff Quik染色

年齢：60代

性別：男性

検査目的：肺癌化学療法中の再生検

現病経過：2017年労作時息切れで受診

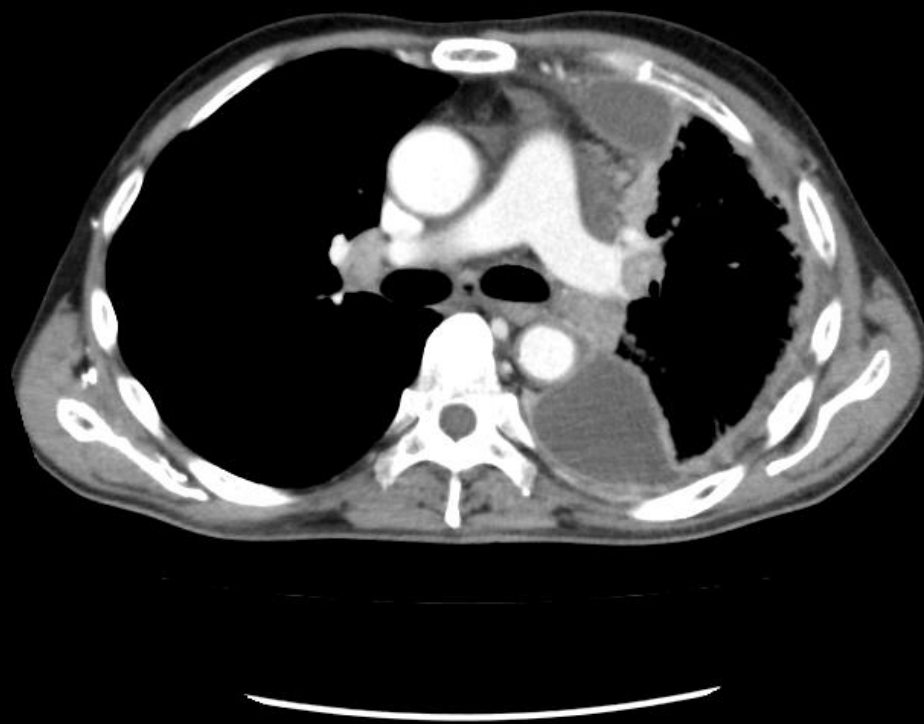
胸水より肺腺癌の診断

2017年当院にて肺腺癌に対する

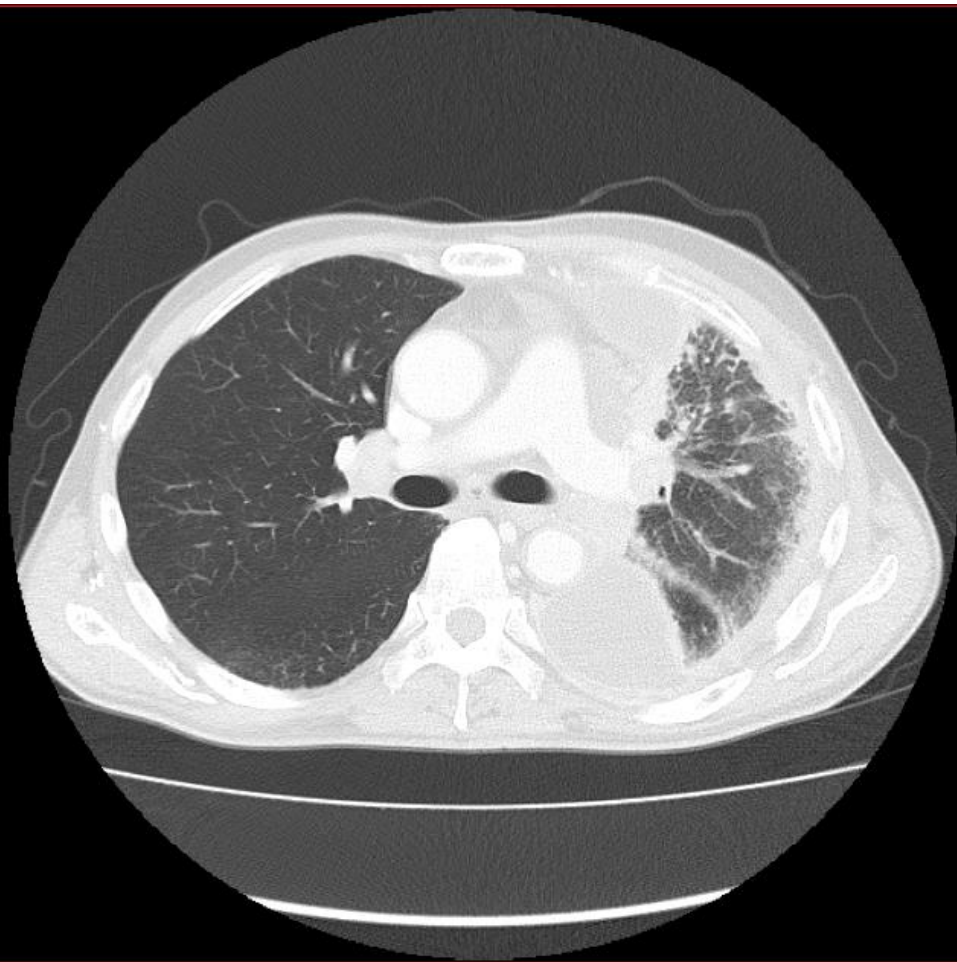
化学療法開始

既往歴：胃潰瘍(40代) 糖尿病(40代)

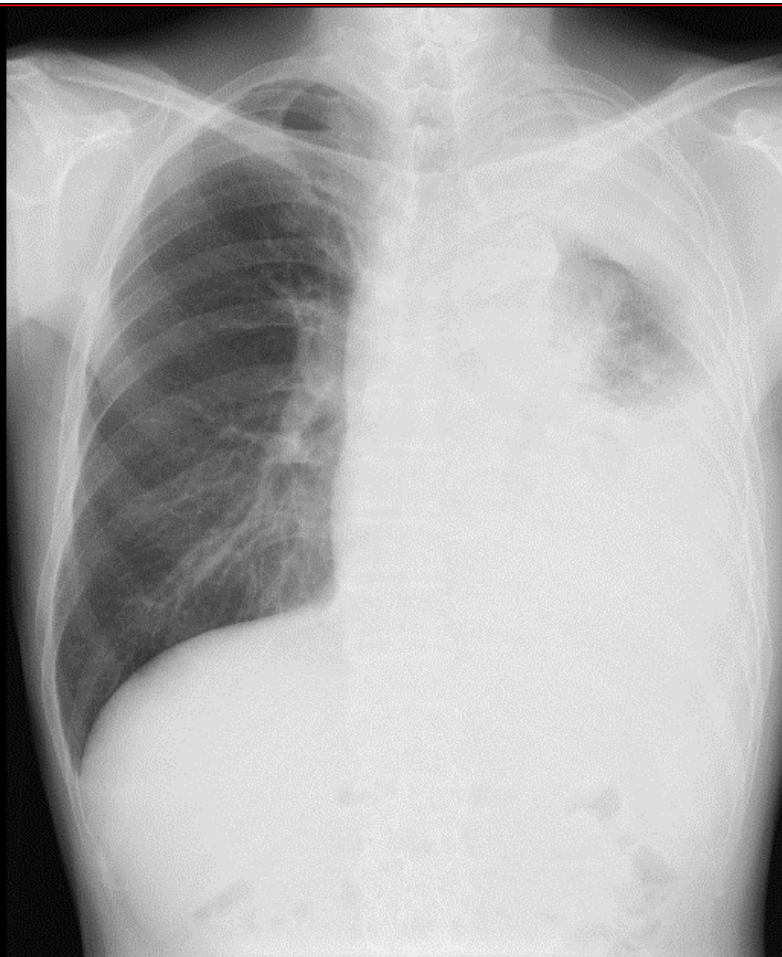
# 縱隔CT

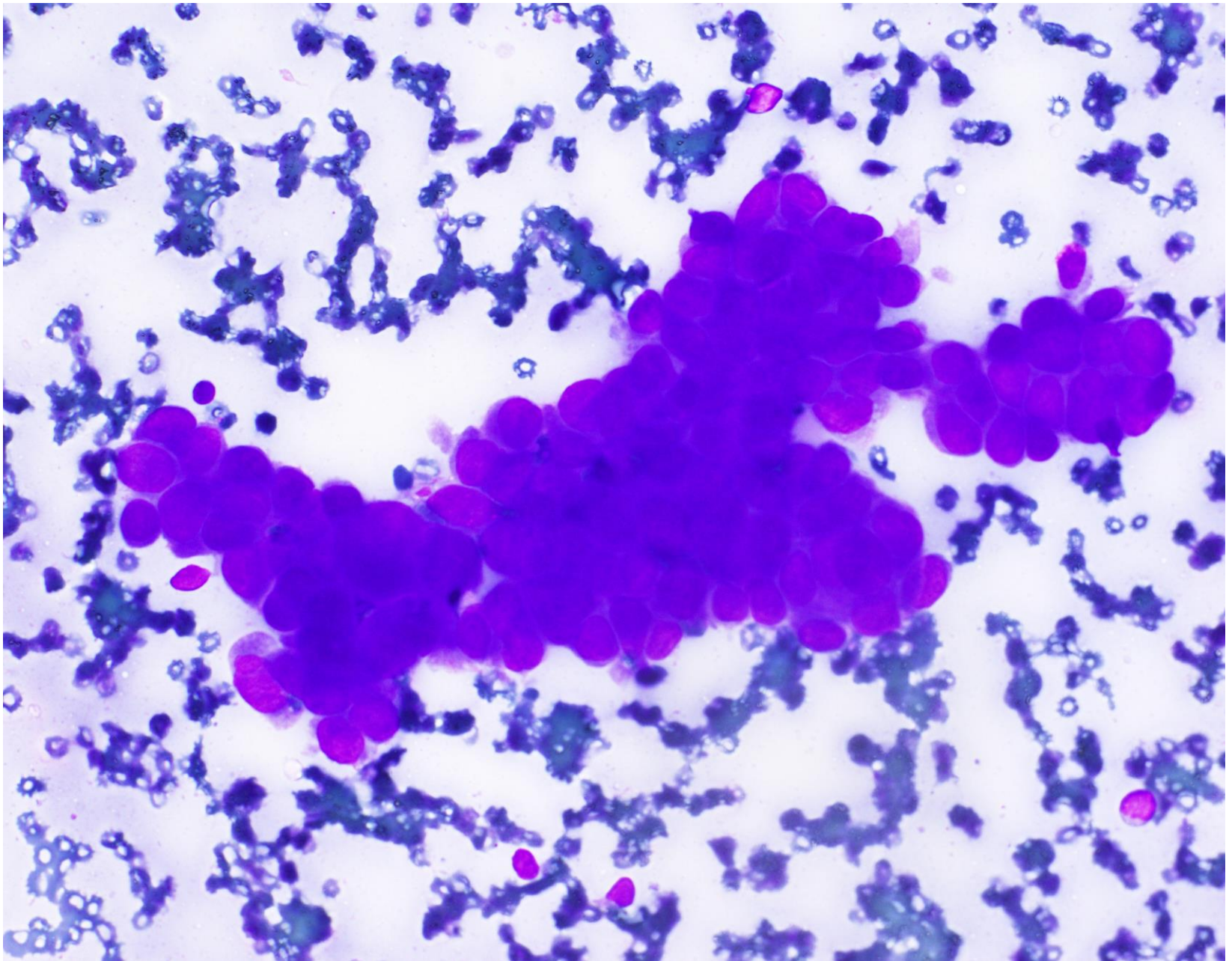


# 肺野CT

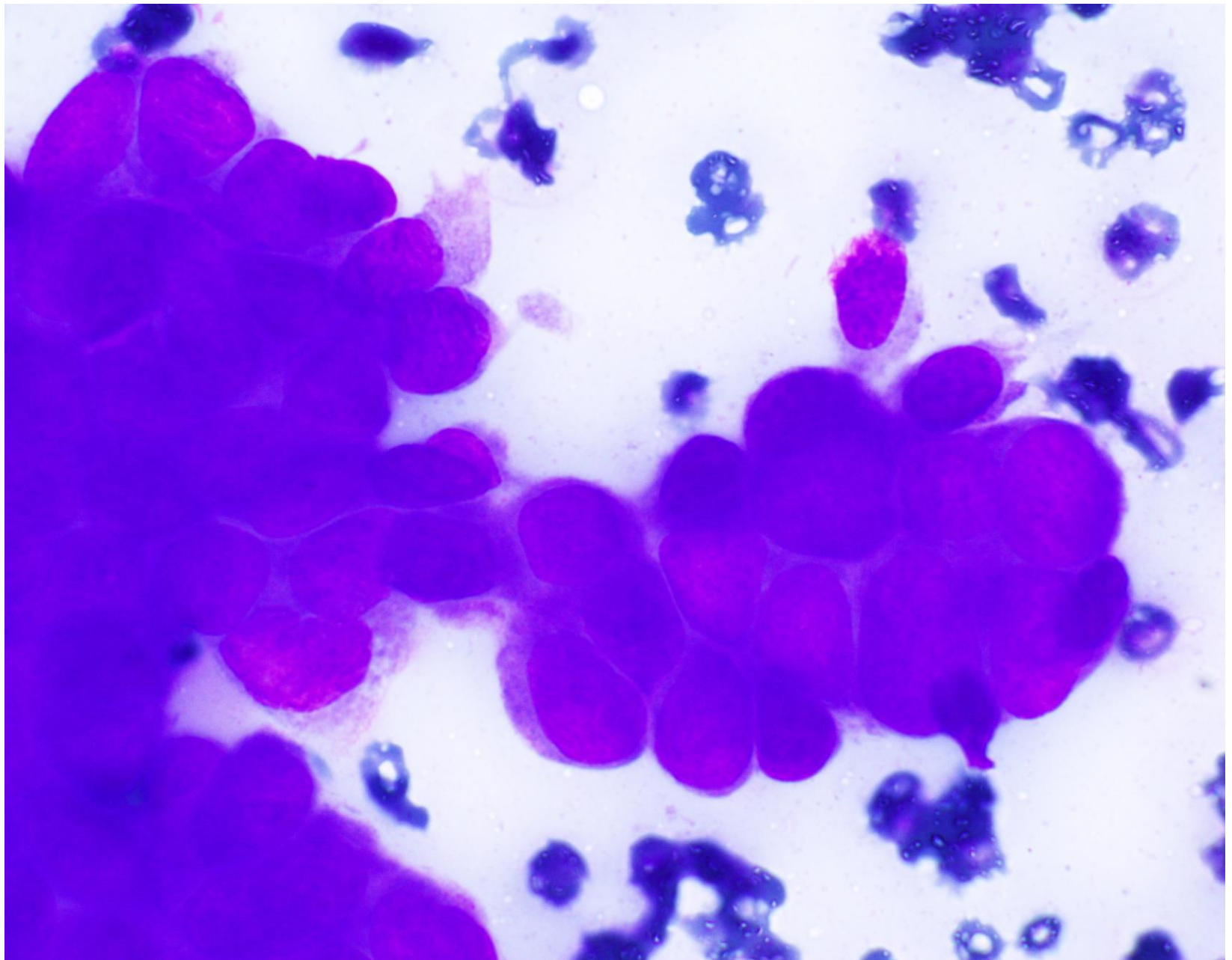


# レントゲン像

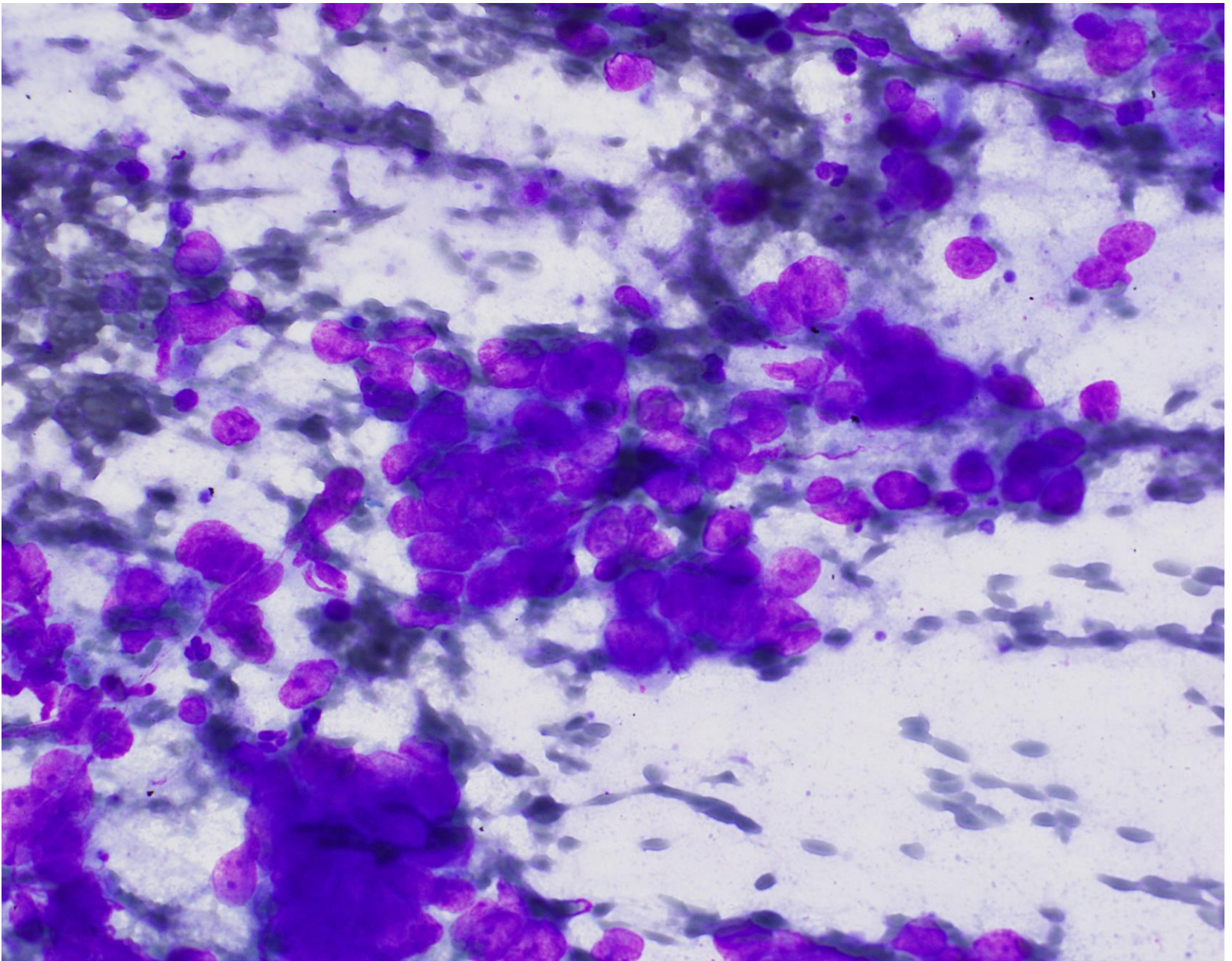




EBUS-TBNA diff quick x 40

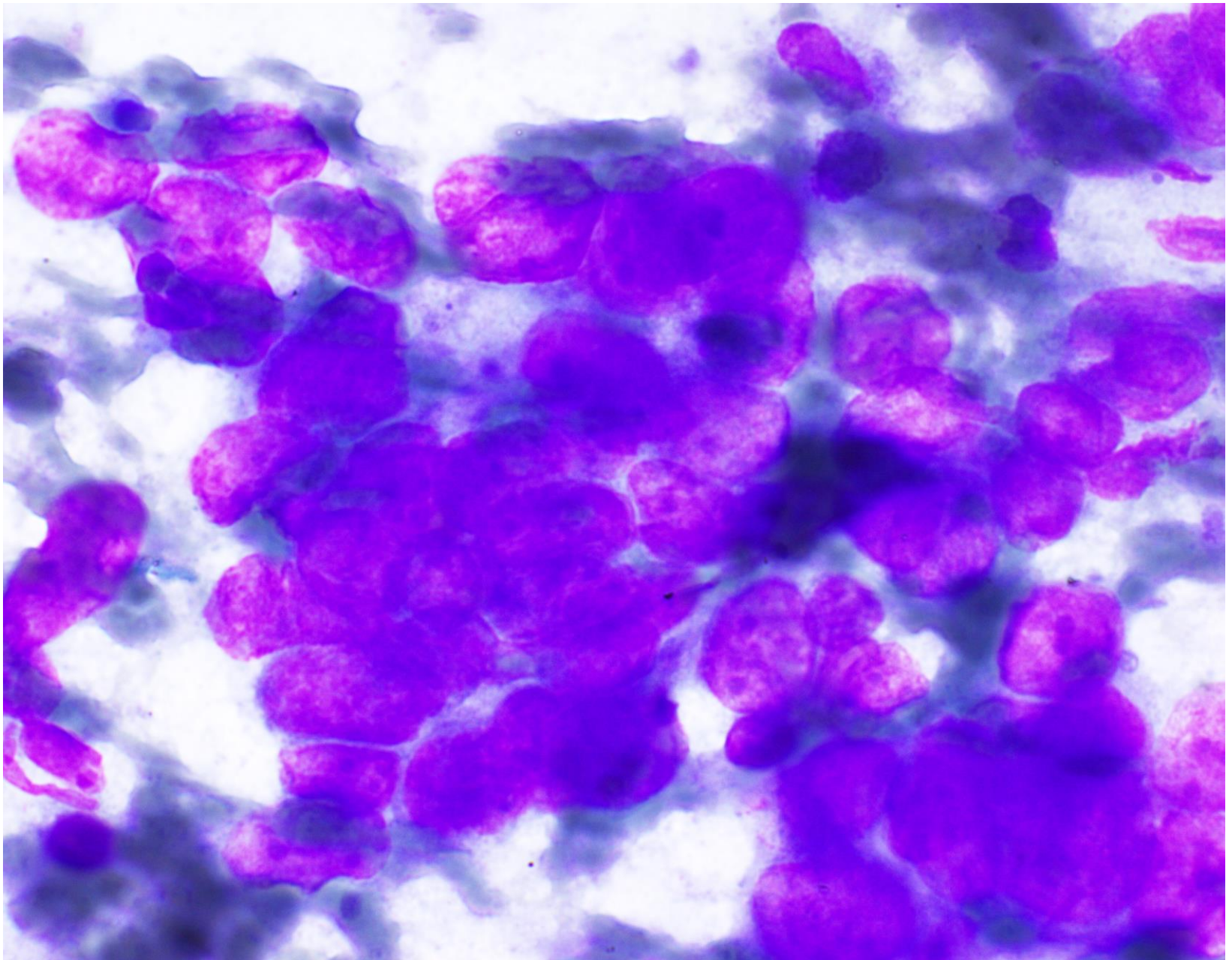


EBUS-TBNA diff quick x 100

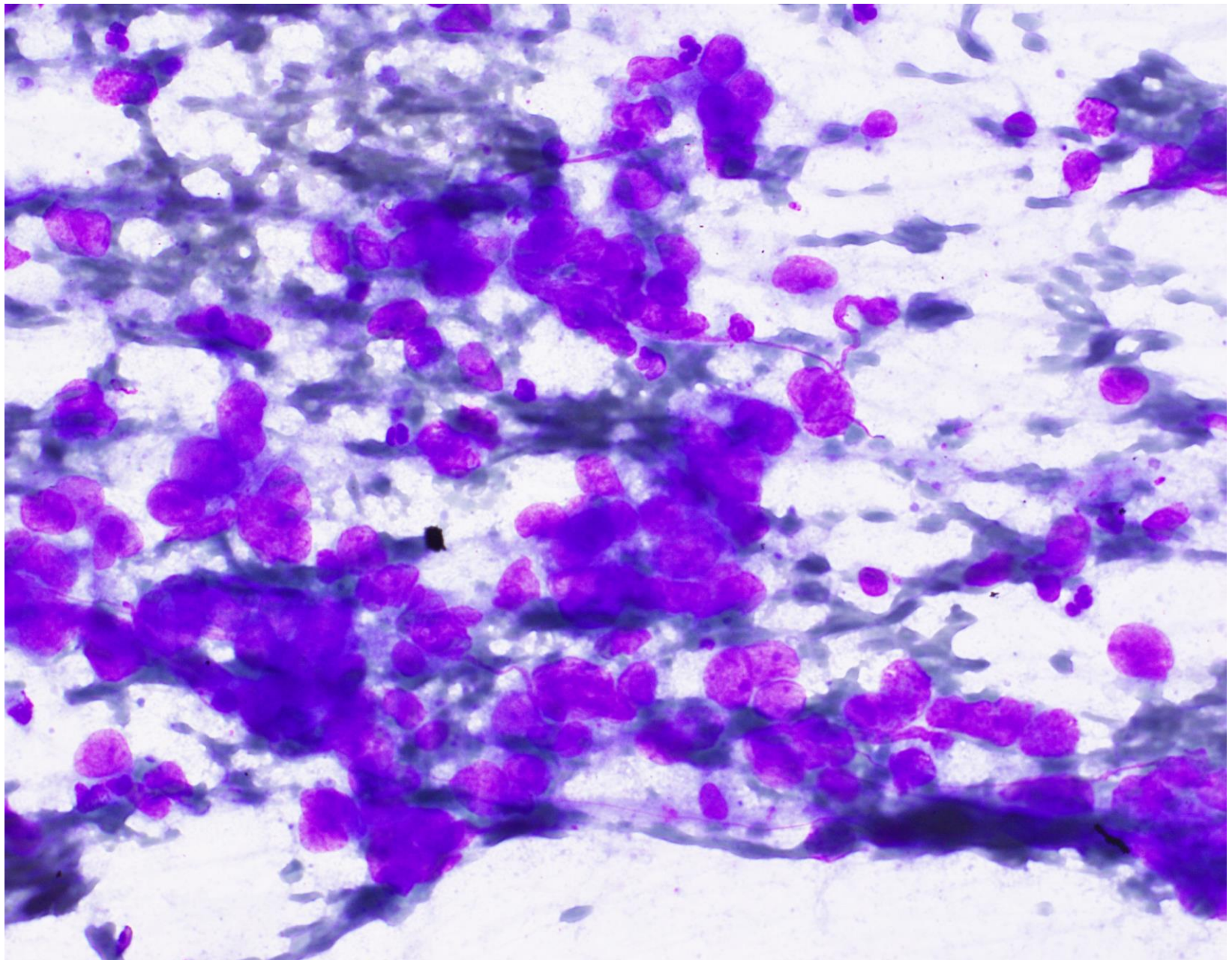


EBUS-TBNA diff quick x 40

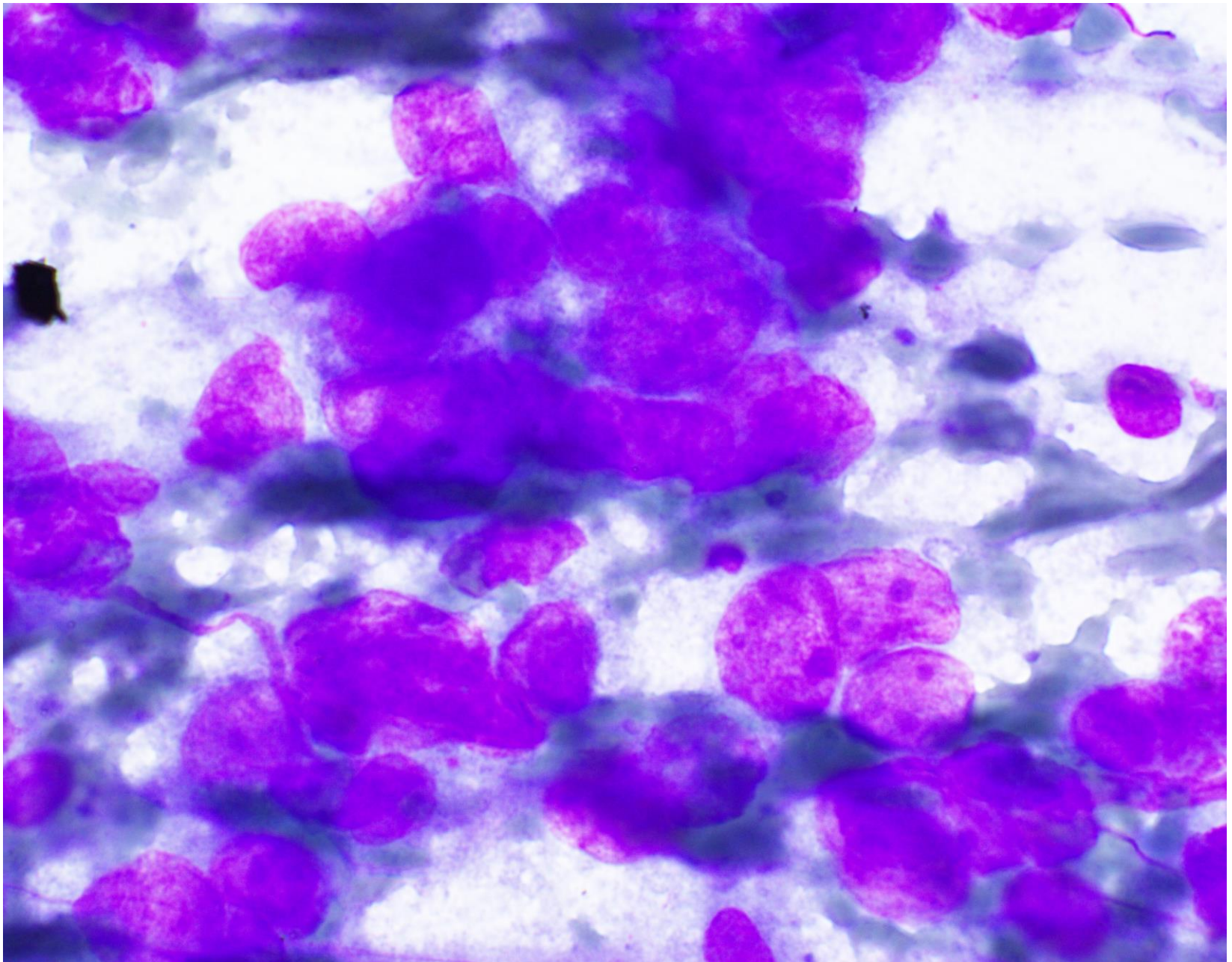




EBUS-TBNA diff quick x 100



EBUS-TBNA diff quick x 40



EBUS-TBNA diff quick x 100

# 選択肢

- ①小細胞癌
- ②扁平上皮癌
- ③腺癌 + 小細胞癌
- ④腺癌 + 扁平上皮癌
- ⑤腺癌 + 悪性リンパ腫