

Transportation from ITAMI Airport (ITM)

(Osaka International Airport *Domestic Airport)

伊丹空港

1. Limousine Bus



ITAMI
Airport (ITM)

1. Limousine Bus (55 mins)

KYOTO
Station 

One-way: 1,340 Yen

https://www.okkbus.co.jp/en/timetable/K/#one_way



Search details



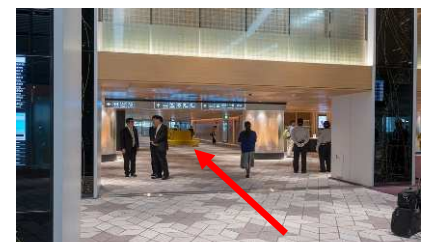
From the Arrivals gate (2F Departure/Arrival Floor),
walk straight ahead and exit.
Take the elevator or escalator to 1F.

Buy bus tickets to **KYOTO** at the **Ticket window** next
to the exit

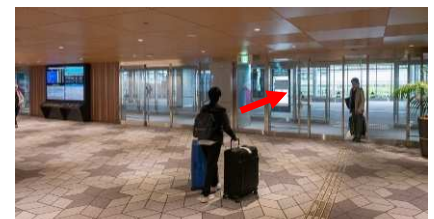
Take a bus to **KYOTO Station** at **Bus Stop 2**.

It takes approx. 55 minutes.

*The travel time may vary depending on the traffic situation.



2F Departure/Arrival Floor



Exit and move to 1F

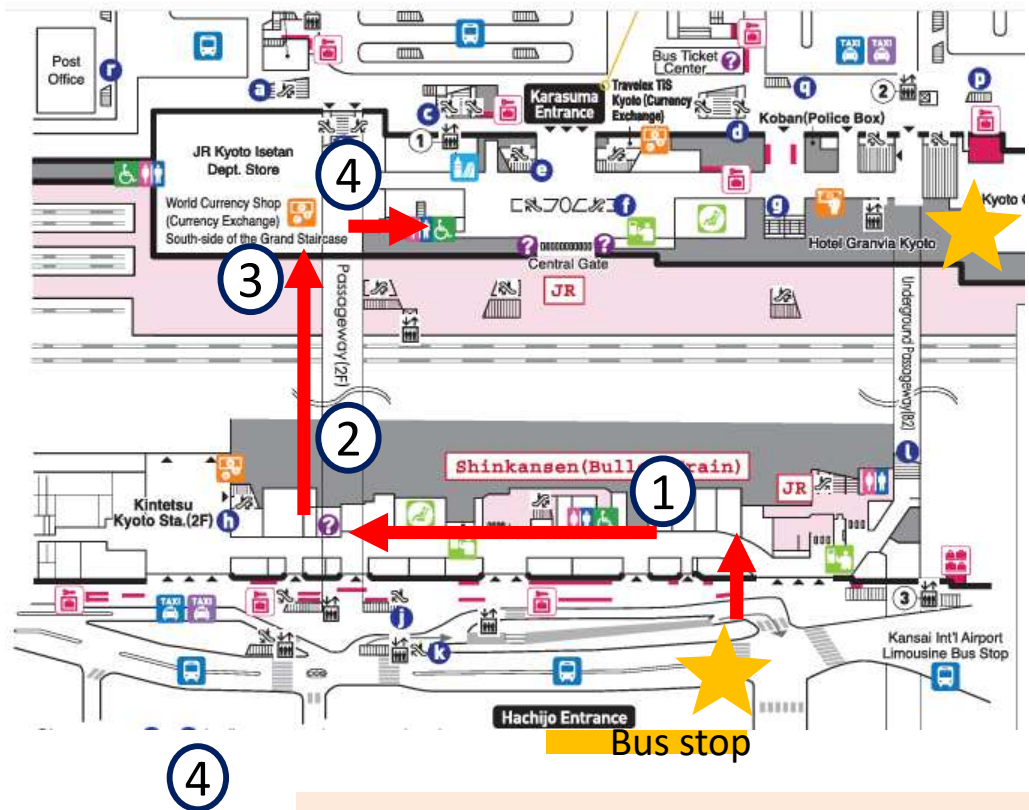
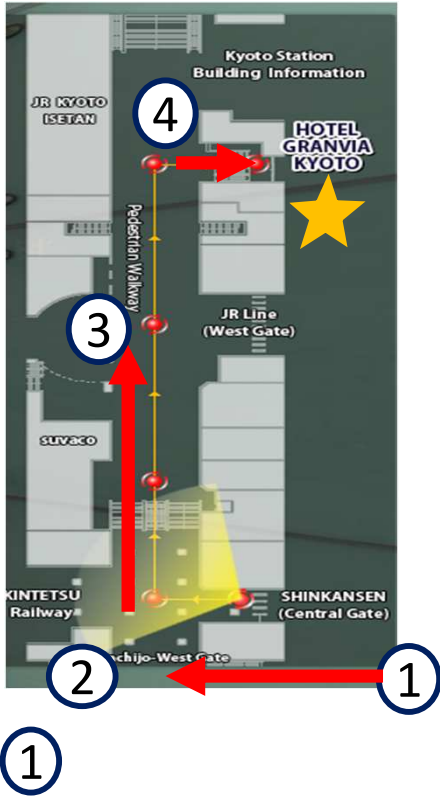


Transportation from ITAMI Airport (ITM)

(Osaka International Airport *Domestic Airport)

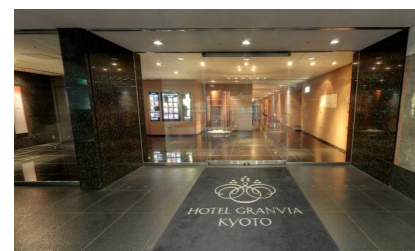
伊丹空港

Airport Bus Stop to Hotel Granvia



From the airport bus stop, walk straight to KYOTO Station.

The sign will appear on your right.
(The opposite is ISETAN departmental store)
Take the small escalator.



Entrance

Take the elevator or escalator and go up to 2F (passageway).

Walk straight and take the small escalator.
The entrance of Hotel Granvia is on your right.



Walk to the escalator.



Go straight.