

Seasonal Events in Kesennuma

For information about a specific event, contact the Tourism Section of Kesennuma City.

Spring

Tokusenjo Tsutsuji (Azalea) Festival

Mt. Tokusenjosan, 10 times as large as Tokyo Dome, provides a picturesque view of Yamatsutsuji and Rengetsutsuji azalea flowers (in late May).



Autumn Rias Kaki (Oyster) Festival Karakuwa

Fresh oysters, as well as other delicious seafood, are sold at reasonable prices. Enjoy various activities and sample oysters and scallops, and other nice foods.

We're working hard!

Fukkou (Reviving) Shopping Sites

Shopping areas in the city were seriously damaged by the 2011 disaster. However, business has resumed at temporary buildings. We are working hard towards recovery, and we greatly appreciate your support from all over the world. We look forward to your visit.

Summer

Kesennuma Minato (Port) Festival

This grand, citywide summer festival is held annually. The whole inner bay area becomes the stage for various activities such as Hamarainya Dance, a parade, an Uchiyayashi drum performance, fireworks on the sea, and more.



Winter Kesennuma Tenbata (Kite) Festival

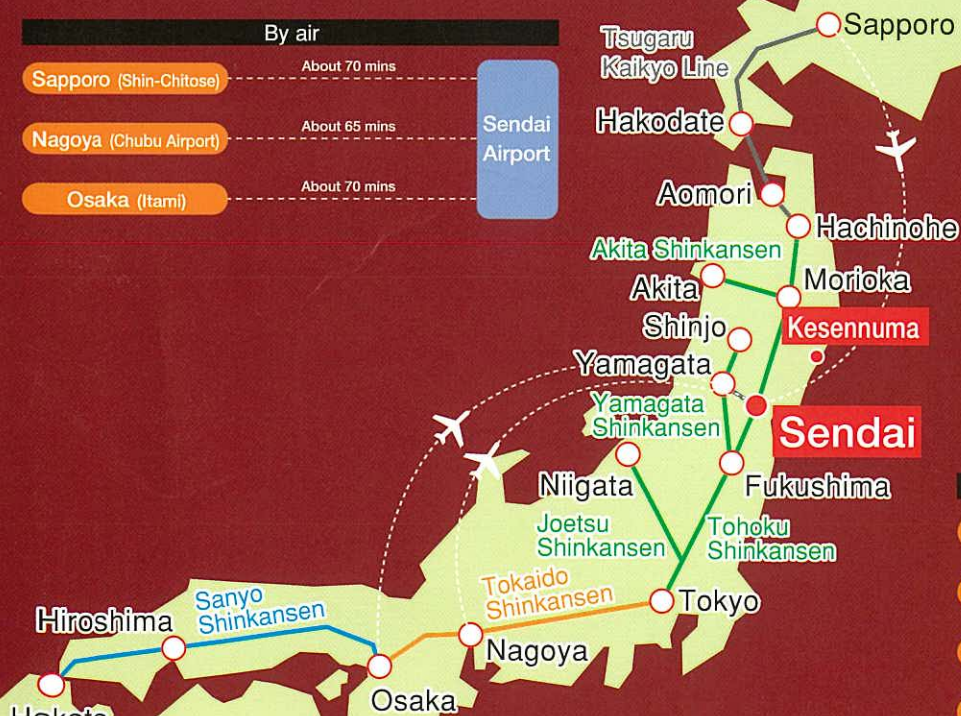
At this kite-flying event, people show off their handmade kites. They include Kesennuma's traditional Hinode Dako (Sunrise Kite) and Yago Dako (Trade Name Kite). Popular local products and small kites are sold, and free grilled tuna is also offered at the venue.

- 4 April Kesennuma Tsubaki Marathon
This civil marathon takes place in Kesennuma Oshima Island, when the tsubaki (camellia) flowers there are in full bloom.
- 5 May Tokusenjo Tsutsuji (Azalea) Festival (Late May)
Blossoms of 50,000 azalea shrubs bloom on Mt. Tokusenjosan, 711 meters above sea level.
- 7 July Beach Opening
Sea Urchin Festival (TBD)
Sea urchin is sold at bargain prices at the Motoyoshi Agricultural and Marine Market (attached to "Michi-no-Eki" Oya Kaigan).
- 8 August Kesennuma Minato (Port) Festival
Features Uchiyayashi drum groups' performance and fireworks on the sea.
Manbou (Ocean Sunfish) Samba Contest
Team samba dance performances on Tsuya Shopping Street, Motoyoshi Area.
- 9 September Kesennuma Sanma (Saury) Festival (Currently Suspended)
Free sampling of charcoal-grilled saury is very popular.
- 10 October Mo-Land Festival
Enjoy various ranch activities with your children, including playing with ponies and rabbits, eating barbecue, and milking a cow and making butter.
Kesennuma Sangyo (Industry) Festival
A wide range of local fishery and agricultural products are sold at a discount.
- 11 November Rias Kaki (Oyster) Festival Karakuwa
Fresh local products are sold at reasonable prices. Free samples of oysters and scallops are available.
- 12 December Awabi (Abalone) Festival
Live abalone is sold at low prices at the Motoyoshi Agricultural and Marine Market (attached to "Michi-no-Eki" Oya Kaigan).
- 1 January Fish Market First Bidding
The first event of the new year in the lively port city of Kesennuma.
Osaki Shrine Festival
The Dontosai Festival is held at Osaki Shrine, located on the tip of the Karakuwa Peninsula, and people pray for good health and bountiful catches from the ocean.
- 2 February Kesennuma Tenbata (Kite) Festival
A festival of hand-made kite flying. (Date subject to change.)



ACCESS

To Sendai from cities in Japan



◆ Overview of Kesennuma City (as of December, 2014)
Area: 333.38 km²
Population: 67,657
Households: 26,069

◆ Located in the southeast of the Kitakami Mountain Range, in the northernmost part of Miyagi Prefecture, Kesennuma is a natural port blessed with year-round tranquility. At the mouth of its bay, there is the beautiful island of Oshima, also known as the Green Pearl. The climate of the city is a moderate, oceanic type compared to that of internal Miyagi Prefecture.

Tourism Section, Industrial Department, Kesennuma City
1-1-1 Youka-machi, Kesennuma City, 988-8501
TEL: 0226-22-6600 (main)
FAX: 0226-24-5519 (direct)
kanko@city.kesennuma.lg.jp

Kesennuma Tourism & Convention Bureau
7-13 Sakana-Ichiba-mae, Kesennuma City 988-0037
TEL: 0226-22-4560 FAX: 0226-22-9280
k-kanko@k-macs.ne.jp

By JR train

By JR train			
Tokyo	Tohoku Shinkansen	Sendai Station	
	About 1 hr 40 mins		
Nagoya	Tokaido Shinkansen	Tokyo	Tohoku Shinkansen
	About 1 hr 45 mins		About 1 hr 40 mins
Shin-Osaka	Tokaido Shinkansen	Tokyo	Tohoku Shinkansen
	About 2 hrs 30 mins		About 1 hr 40 mins
Sapporo	Tsugaru Kaikyo Line via Muroran Line	Aomori	Tohoku Line
	About 5 hrs 40 mins		About 1 hr 30 mins

Created March 2015

Life with the Ocean

KESENNUMA

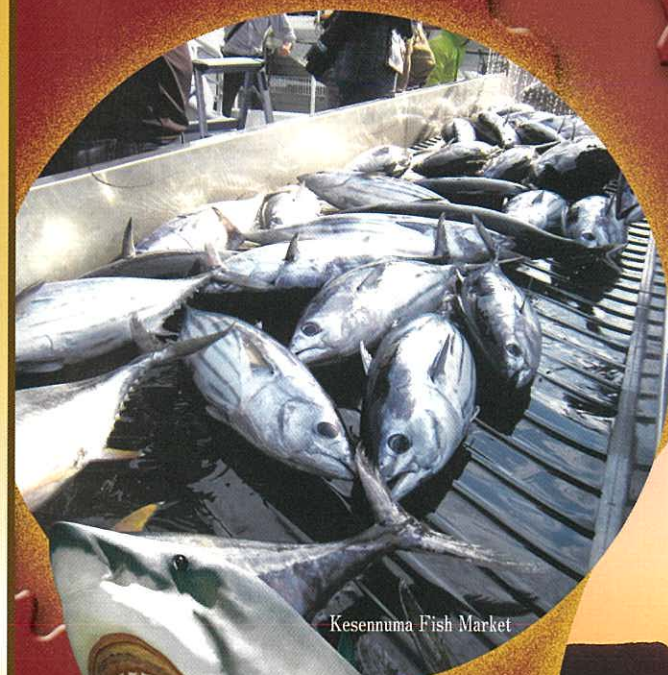
Kesennuma City, Miyagi, Japan

City of Seafood and Healthy Life / City of Slow Food

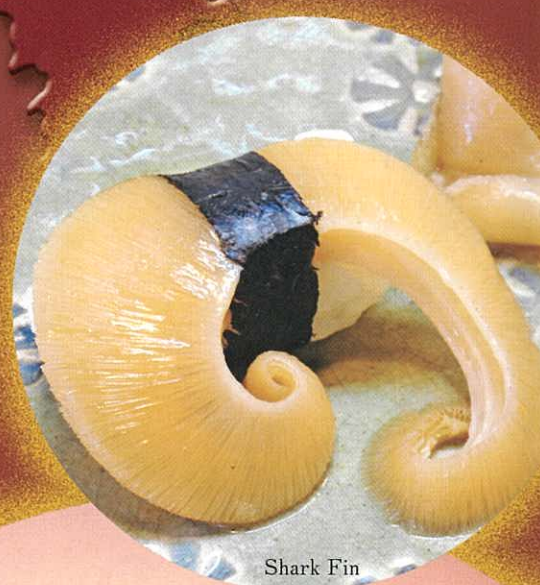


Tourism Character
Marine boy, Hoya Boya

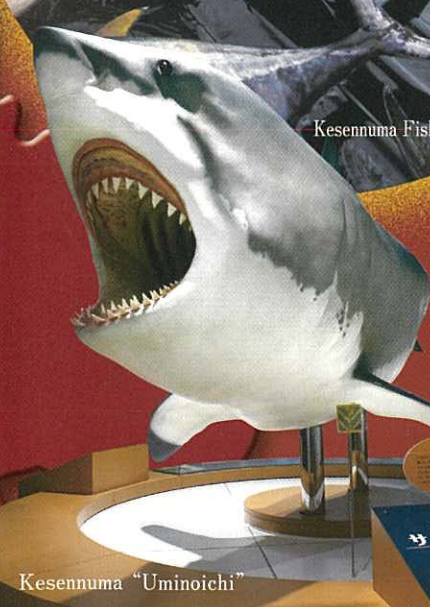
My city, Kesennuma, is a port city facing the Pacific Ocean. We have many delicacies, such as shark fin, bonito and saury, and scenic views of the sea and mountains. Our city was seriously damaged by the Great East Japan Earthquake in 2011, but we're working hard towards recovery. Come and visit us!



Kesennuma Fish Market



Shark Fin



Kesennuma "Uminoichi"

Sunrise at Oreishi

Scenic Spots



Ogama Hanzo "Oreishi" - a Symbol of Kesennuma that Withstood the Tsunami

Kesennuma is on the southernmost part of the Sanriku Fukko National Park, as well as on the gorgeous rias (saw-tooth shaped) coast. Oreishi, in the Karakuwa Peninsula, is a marble pillar 16m high and 3m wide, that towers towards the sky from the sea.

◆Parking: Ogama: 30 cars, 5 large cars
Hanzo: 30 cars, 1 large car



Mt. Kameyama in Kesennuma Oshima

The beautiful Oshima Island, also known as the Green Pearl, is 24km in circumference, and can be reached by ferry in 25 minutes. From the top of the mountain, you can enjoy a magnificent panoramic view of the rias coast from 235m above sea level.



Revived from the Tsunami- Cape Iwaisaki "Shiofukiwa Rock"

This dynamic water spout, which can be seen every time a big wave flows in, blows out of a hole in the limestone rock called Shiofukiwa, which has been eroded over the ages.

◆Parking: 30 cars



Mt. Tokusenjosan

This mountain rises 711m above sea level, and has one of the biggest areas of wild azalea shrubs in Japan. In late May, Yamatsutsuji and Rengetsutsuji azalea flowers turn the whole mountain bright red.

◆Parking: 150 cars



Kodanohama Beach (A top-100 swimming beach)

This beach was designated in 2006 by the Ministry of the Environment as one of the "100 best swimming beaches" in Japan. It was seriously damaged by the great tsunami in 2011. However, with the support of local residents and volunteers, it was reopened as a swimming beach in 2012.



Mt. Anbasan

This mountain, a symbol of Kesennuma with its name meaning "safe waves," is a place where people pray for fishermen's safe journeys and bountiful fishing catches. The top of the mountain offers breathtaking views of Kesennuma Bay.

◆Parking: 20 cars

History & Culture



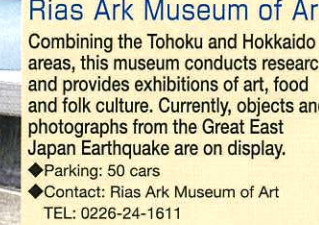
Shishiori Gold Mine Museum / Oya Mine History Museum

One of the biggest lumps of natural gold - nicknamed "Monster Gold" - was unearthed from Shishiori Gold Mine. Oya Mine also used to be a leading mine, excavating more than one ton of gold per year. Both mines supported the old golden culture in Hiraizumi. The museums exhibit precious materials from those days. Each mine was designated as a Geopoint of Sanriku Geopark in September, 2013.



Enunkan Garden

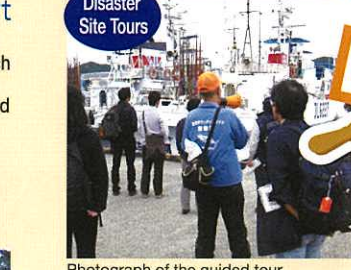
A garden with a pond owned by the Ayukai Family, who served the Date Family, the feudal-lord clan of the Sendai domain. It was created in the early Edo period by Shimizu Dokan II, the head of a tea ceremony school of the Sendai domain. Many trees, including a rare weeping cypress, are planted in the garden, and you can enjoy them in any season. Ochiai Naobumi, a renowned scholar of Japanese literature and tanka poet, is from the Ayukai Family.



Rias Ark Museum of Art

Combining the Tohoku and Hokkaido areas, this museum conducts research and provides exhibitions of art, food and folk culture. Currently, objects and photographs from the Great East Japan Earthquake are on display.

◆Parking: 50 cars
◆Contact: Rias Ark Museum of Art
TEL: 0226-24-1611



Disaster Site Tours

Photograph of the guided tour
Kesennuma Volunteer Guides / Disaster Recovery Storytellers
Volunteer guides show you around sightseeing spots, telling about the history, nature and culture, and storytellers inform you of experiences of the 2011 disaster and recovery from it. Both groups convey the unique charms of Kesennuma.

◆Contact: Kesennuma Tourism & Convention Bureau
TEL: 0226-22-4560



Experience



Making Soba Noodles

Experience making noodles using local buckwheat flour, at a classroom in the old wooden Tsukidate Elementary School building. After seeing milling work by waterwheel, you can try each process (kneading, flattening, and cutting) hands-on. You are sure to enjoy the taste of soba noodles that you made yourself.

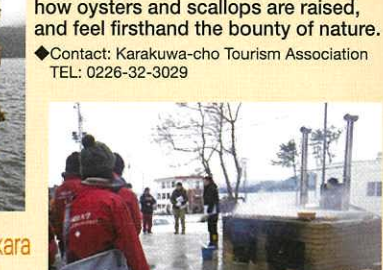
◆Contact: Forest School in Yatsuse
TEL: 0226-55-2323



Making Squid Shiohara (Salted Seafood)

Experience making shiohara from squid caught off the coast of Sanriku after cleaning the squid yourself. Shiohara makes a great souvenir.

◆Contact: Kesennuma Oshima Tourism Association
TEL: 0226-28-3000



Making Salt in Cape Iwaisaki

Iwaisaki used to be an active salt production area for the Sendai domain. You can experience a traditional salt production process to make natural, mineral-rich salt, using sea water.

◆Contact: Kesennuma City Hashikami Tourism Association
TEL: 0226-27-5410



Shark Fin

The Sanriku Coast has many sunny days in winter, and the dry west wind is suitable for the production of good shark fin. As such, this is Japan's top area for shark fin both in quantity and quality.



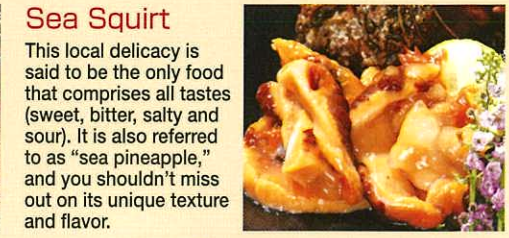
Bonito

The official fish of the city, the bonito catch here leads all of Japan in both quantity and sales. The bonito coming back from the south in September are called "torogatsuo," and are fatty and full of flavor.



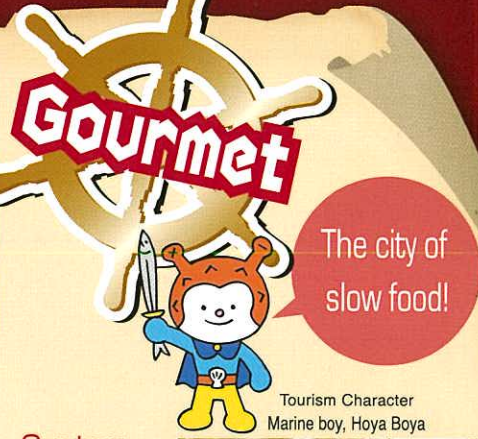
Sauri

Written as "autumn sword fish" in kanji (Chinese character), saury represents the taste of autumn in Kesennuma. The best season is between late August and late November.



Sea Squirt

This local delicacy is said to be the only food that comprises all tastes (sweet, bitter, salty and sour). It is also referred to as "sea pineapple," and you shouldn't miss out on its unique texture and flavor.



Oysters

The rivers that flow into the Kesennuma Bay from the Kitakami Mountain Range are rich in nutrients, and the oysters grown there are thick in body and in flavor. The best season is between mid-October and early April.



Sushi

A variety of seafood, abundant in each season, makes Kesennuma a mecca for sushi. You can enjoy some of the freshest and most exquisite sushi available.



Kesennuma "Uminoichi"

A tourism facility where a wide variety of seafood from Kesennuma is on sale. It was closed due to the 2011 disaster, but reopened in 2014. Inside the facility, there are shops and restaurants, a tourist information center and the Shark Museum. At the Shark Museum, you can learn about the amazing lives of sharks. There is also a theater showing a film on the 2011 disaster and recovery from it. The information center has detailed information about sightseeing spots, dining and accommodations.



Mo-Land Motoyoshi

A 52-hectare green pasture stretching on a hill overlooking the Pacific Ocean. You can spend time with cows and ponies that are let out to graze. There is also an athletic facility, including the longest roller slide in Miyagi Prefecture. A butter making workshop is also available.

◆Parking: 58 cars
◆Contact: Mo-Land Motoyoshi
TEL: 0226-43-9006



"Michi-no-eki" Oyakeigaan Coast (Agricultural and Marine Market)

Ocean-fresh seafood and vegetables picked in the morning are sold at this center. Though severely damaged by the 2011 disaster, it was reopened in April, 2013. The "Beach Memory" restaurant serves seafood rice bowls and the popular, locally-developed shark fin soft serve ice cream.

◆Parking: 57 cars
◆Contact: Motoyoshi-cho Sangyo Shinko Kosha, Ltd.
TEL: 0226-44-3180



Kugunarihama Beach

Designated National Treasures
Kugunarihama Beach and Kukanakihama Beach
Both Kugunarihama Beach and Kukanakihama Beach are beaches where the dry sand squeaks when stepped on. Kugunarihama Beach is in Oshima, Kesennuma, and Kukanakihama Beach is in Moun, Karakuwa Peninsula. Both were designated as National Treasures in 2011.



Isaribi Park

Located on the hillside of Mt. Hayamasan, this park provides great views of the Karakuwa Peninsula sea. There is a restaurant where you can enjoy dishes using seasonal ingredients. Fish-luring fires can be seen on the horizon at night.

◆Parking: 50 cars / 5 large cars
◆Contact: Isaribi Park
TEL: 0226-32-4340



Karakuwa Peninsula Visitor Center / Tsunami Museum

Experience people's lives in the natural surroundings of the Karakuwa Peninsula. Currently, photographs of the Great East Japan Earthquake are on display. The Tsunami Museum, the first of this kind in Japan, lets you experience firsthand the menacing power of nature via a virtual tsunami.

◆Parking: 30 cars / 5 large cars
◆Contact: Karakuwa Peninsula Visitor Center
TEL: 0226-32-3029

Sanriku Geopark

Designated as a Geopark of Japan in September, 2013

Geosite (Local Area)	Geopoint (Scenic Point)
Karakuwa Peninsula	Cape Otski, Ogama / Oreishi / Hanzo / Dairisekigaan Coast, Kukanakihama Beach, Tsunamishi in Kannokura
Oshima Island	Kugunarihama Beach, Cape Tatsumaizaki, Wakagihama Beach
Cape Iwaisaki	Permian fossil site, Statue of Sumo Wrestler Yokozuna (Grand Champion), Hidenoyama Raigyo, Shiofukiwa
Kesennuma Bay / Motoyoshigaan Coast	Shinmeisaki, Oisehama Beach, Oyakeigaan Coast, Osawakeigaan Coast
Paleozoic Nanbu-Kitakami	Permian fossil site in Kamiyasse
Gold Produced in Kesennuma	Oya / Shishiori Gold Mine Sites



Get to know how the earth was formed 500 million years ago, and how it has evolved to the present day. This is Japan's largest Geopark, with a 300 km coast line and 6,000 m² area stretching from Hachinohe, Aomori Prefecture to the Sanriku Coast in Kesennuma, Miyagi Prefecture. Kesennuma has six Geosites containing a multitude of Geopoints.